

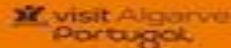


ALGARVE CLASSIC FESTIVAL

25-27 OUTUBRO '24



GENERAL INFORMATION ACF 2024





ALGARVE CLASSIC FESTIVAL

25-27 OUTUBRO '24



Dear Participants

It is an honour and please to host another Algarve Classic Festival at the Autodromo Internacional de Algarve .

We would like to say thank you to all competitors , teams, suppliers and everyone involved, for joining us for this incredible weekend of racing.

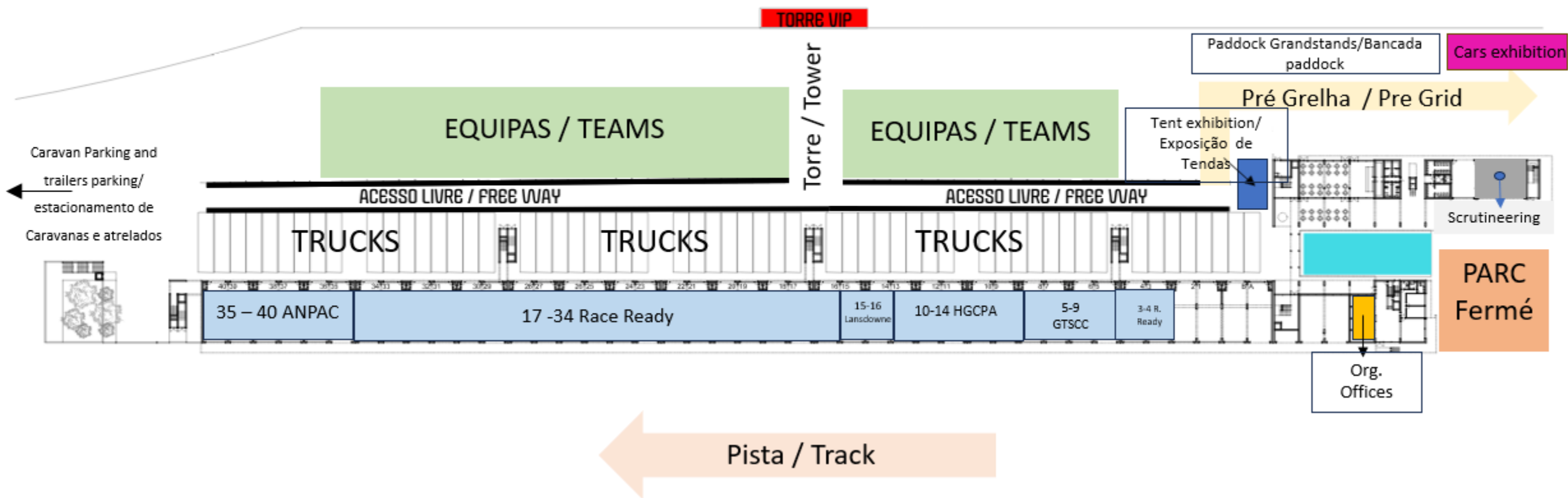
Let ´s make this weekend unforgettable .





ALGARVE CLASSIC FESTIVAL

25-27 OUTUBRO '24





ALGARVE CLASSIC FESTIVAL

25-27 OUTUBRO '24



PADDOCK OPEN AND CLOSE TIMING

The Paddock will be open for access on Wednesday 23/10/2024 from 17H30.

The keys of garages must be collected at the Infopoint until 19:00H, and all the keys must be returned on Sunday to the Infopoint, the trucks must leave until 19:00H.

Arriving Early?

If you are arriving at the circuit before the paddock opens, you can leave your trailers / trucks safely in the front Public Truck Park, which will have 24 Hours security guard.



ALGARVE CLASSIC FESTIVAL

25-27 OUTUBRO '24



GARAGES KEYS

All the keys for the garages are delivered to the person in charge at the Infopoint upon deposit of 500€, in cash.

SUNDAY, after confirmation that the garage is clean, empty and without any damage we return the deposit.

All the waste must be recycled in the provided bins and tyres must be taken back with the team; tyres are not allowed to be left behind at the circuit.



ALGARVE CLASSIC FESTIVAL

25-27 OUTUBRO '24



PRIVATE CAR PADDOCK PARKING

Each team will receive car pass to park your personal /Road car inside the Paddock in the designated area on the right side after the tunnel, called “P1”, please see map attached in this document.

Each team will also receive 1 pass for working vehicles to park in the area in front of the pits, called “P Paddock”.

No road cars and/or trailers will be allowed in front of the pits as we need to keep this area clear for cars going to pre-grid. Please help us in making an organized paddock by respecting this rule as if every driver from the tries to park in the left side will be major confusion.

If you only have a road car as support vehicle, you need to leave all your tools, Fuel, wheels in the pits Thursday.

For your convenience there will be 5 Passes left at the security “20min car pass” in case you need to enter with a road car.



ALGARVE CLASSIC FESTIVAL

25-27 OUTUBRO '24



PERSONAL ACCESS

The accreditation center will be open from Wednesday 16:00H . The accreditation center is located together with administrative checks/sign in , at the entrance of the circuit , see map attached.

Passes will be required to access the circuit all the time.

- Single driver teams will receive: 8 passes 4 Full + 4 Paddock and 2 x P1 car pass.
- Two-driver teams will receive: 9 Passes 5 Full + 4 Paddock and 3 x P1 car pass.



ALGARVE CLASSIC FESTIVAL

25-27 OUTUBRO '24



ACCREDITATION MEDIA

All media or team photographers need to request accreditation before the event. The accreditation process will close on the 23rd October, at 16H00.

The request must be sent to: media@autodromodoalgarve.com



ALGARVE CLASSIC FESTIVAL

25-27 OUTUBRO '24



ACCREDITATION CENTER TIMES

WEDNESDAY, 23rd October: 16H00 – 19H00

THURSDAY, 24th October: 09H00 – 18H00

FRIDAY, 25th October: 07H45 – 18H00

SATURDAY, 26th October: 08H00 – 18H00

SUNDAY, 27th October: 08H30 – 13H30



ALGARVE CLASSIC FESTIVAL

25-27 OUTUBRO '24



TRANSPONDER

Please bring your AMB Transponder with you. Otherwise, the circuit has a limited number of transponders that can be hired. Each hired transponder will cost 70€, plus you need to pay the deposit of 800€ as a guarantee in case you don't return the transponder or it is damaged, please request your transponder to: miguelgloria@parkalgar.com

RESULTS

You have access to the live timing on the page: <http://raceresults.nu>



ALGARVE CLASSIC FESTIVAL

25-27 OUTUBRO '24



ASSEMBLY AREA

All cars should proceed to pre-gridding in the Assembly Area (Please see map above) 40 minutes before the scheduled start of their race, during practices drivers can go directly to the track. Assembly area will be closed as soon as the previous practice/race is finished. As soon as the track is cleared, drivers will then be released onto the Pit Lane and normal FIA race start procedure begins.

If you are late to the assembly area and not inside when the previous race ends, you will be allowed to start the race from the Pit lane.



ALGARVE
CLASSIC FESTIVAL

25-27 OUTUBRO '24



Podium

we would also like to inform you that we will have a digital podium with the image of the event, which you can also use.

The measurements and specifications are as follows in case you would like to have a different image:

Size

8000x3000mm

2048x768 Pixels

Pitch P3.91

We also have the speaker included who will conduct the event and the podiums.



ALGARVE CLASSIC FESTIVAL

25-27 OUTUBRO '24



SIGN ON AND TECHNICAL SCRUTINEERING:

Sign on location: at the accreditation building located at the entrance of the circuit , and **Scrutineering location:** In the Technical Garages. Please see at the map.

Sign on are open for all categories at the following times:

Data	Início	Final	Duração	Competição/Competition	Sessão/Session
24/out	15:00	- 18:00	-	Todas as competições/All competition	Facultativas/optional
24 a 25	16:00	- 19:00	-	Landsdown Motorcycles	Obrigatórias/Compulsory
25/out	08:00	- 08:30	-	Single Seater Series	Obrigatórias/Compulsory
25/out	08:00	- 10:00	-	CPCV + CPV 1300 + C80	Obrigatórias/Compulsory
25/out	08:00	- 10:30	-	HGPCA	Obrigatórias/Compulsory
25/out	08:00	- 11:30	-	CPV Super Legends	Obrigatórias/Compulsory
25/out	08:00	- 12:00	-	Iberian Historic Endurance	Obrigatórias/Compulsory
25/out	08:00	- 13:00	-	CPV Legends	Obrigatórias/Compulsory
25/out	08:00	- 16:00	-	Group 1 Portugal	Obrigatórias/Compulsory
25/out	08:00	- 18:00	-	CPV / Iberian Supercars	Obrigatórias/Compulsory
25/out	13:00	- 19:00	-	GT & Sports Car Cup GT Pre-1966	Obrigatórias/Compulsory
26/out	08:00	- 10:00	-		



ALGARVE CLASSIC FESTIVAL

25-27 OUTUBRO '24



SIGN ON AND TECHNICAL SCRUTINEERING:

Scrutineering are open for all categories at the following times:

Data	Início	Final	Duração	Competição	Sessão/Session
24/out	15:00	- 18:00	-	Todas as competições excepto CPV/ISC / CPVC / CPV 1300 / CPVL / CPVSL	Facultativas/optional
24 a 25	15:00	- 18:00	-	Landsdown Motorcycles	Obrigatórias/Compulsory
25/out	08:00	- 08:30	-	Single Seater Series	Obrigatórias/Compulsory
25/out	08:00	- 10:00	-	CPCV + CPV 1300 + C80	Obrigatórias/Compulsory
25/out	08:00	- 10:30	-	HGPCA	Obrigatórias/Compulsory
25/out	08:00	- 11:30	-	CPV Super Legends	Obrigatórias/Compulsory
25/out	08:00	- 12:00	-	Iberian Historic Endurance	Obrigatórias/Compulsory
25/out	08:00	- 13:00	-	CPV Legends	Obrigatórias/Compulsory
25/out	08:00	- 16:00	-	Group 1 Portugal	Obrigatórias/Compulsory
25/out	08:00	- 18:00	-	CPV / Iberian Supercars	Obrigatórias/Compulsory
25/out	13:00	- 19:00	-	GT & Sports Car Cup GT Pre-1966	Obrigatórias/Compulsory
26/out	08:00	- 10:00	-		



ALGARVE CLASSIC FESTIVAL

25-27 OUTUBRO '24



DRIVERS BRIEFING

It is compulsory for all drivers to attend the Briefing. All Briefings will be Friday and will take place in the Briefing Room on the 1st floor:

Data	Início	Final	Duraçãc	Competição	Sessão
25/out	08:00	- 08:30	00:30	Single Seater Series	Briefing
25/out	10:00	- 10:30	00:30	CPCV + CPV 1300 + C80	Briefing
25/out	10:30	- 11:00	00:30	HGPCA	Briefing
25/out	11:30	- 12:00	00:30	Landsdown Motorcycles	Briefing
25/out	12:00	- 12:30	00:30	CPV Legends	Briefing
25/out	12:00	- 12:30	00:30	CPV Super Legends	Briefing
25/out	12:30	- 13:00	00:30	Iberian Historic Endurance	Briefing
25/out	16:00	- 16:30	00:30	Group 1 Portugal	Briefing
25/out	18:00	- 18:30	00:30	CPV / Iberian Supercars	Briefing
26/out	09:00	- 09:30	00:30	GT & Sports Car Cup GT Pre-1966	Briefing



ALGARVE CLASSIC FESTIVAL

25-27 OUTUBRO '24



Posting of admission lists

Data	Início	Final	Duração	Competição	Sessão
25/out	08:15	-	-	Single Seater Series	Lista Admitidos
25/out	09:00	-	-	CPCV + CPV 1300 + C80	Lista Admitidos
25/out	11:15	-	-	HGPCA	Lista Admitidos
25/out	12:00	-	-	CPV Legends	Lista Admitidos
25/out	12:00	-	-	Landsdown Motorcycles	Lista Admitidos
25/out	12:00	-	-	CPV Super Legends	Lista Admitidos
25/out	12:30	-	-	Iberian Historic Endurance	Lista Admitidos
25/out	16:00	-	-	Group 1 Portugal	Lista Admitidos
25/out	19:00	-	-	CPV / Iberian Supercars	Lista Admitidos
26/out	09:00	-	-	GT & Sports Car Cup GT Pre-1966	Lista Admitidos

ALGARVE CLASSIC FESTIVAL

25-27 OUTUBRO | OCTOBER '24

HORÁRIO DAS PROVAS | TIMETABLE



SEXTA-FEIRA FRIDAY	INÍCIO START	FIM END	DURAÇÃO LENGTH	
CPC Legends	8:50	9:10	0:20	Private Practice
Single Seater Series	9:15	9:40	0:25	Free Practice
CPV / Iberian Supercars	9:45	10:45	1:00	Free Practice 1
GT & Sports Car Cup GT Pre-1966	10:50	11:20	0:30	Private Practice
CPCV + CPV 1300 + C80	11:30	11:50	0:20	Free Practice
HGPCA	12:00	12:25	0:25	Qualifying
Landsdown Motorcycles	12:35	12:55	0:20	Qualifying
CPV Super Legends	13:05	13:25	0:20	Free Practice
Iberian Historic Endurance	13:35	14:15	0:40	Qualifying
CPV Legends	14:25	14:50	0:25	Qualifying
CPV / Iberian Supercars	15:00	16:00	1:00	Free Practice 2
CPCV + CPV 1300 + C80	16:10	16:35	0:25	Qualifying
Single Seater Series	16:45	17:10	0:25	Qualifying
CPV Super Legends	17:20	17:45	0:25	Qualifying
Group 1 Portugal	17:55	18:35	0:40	Qualifying
SÁBADO SATURDAY	INÍCIO START	FIM END	DURAÇÃO LENGTH	
CPV / Iberian Supercars	8:20	9:00	0:40	Free Practice 3
Group 1 Portugal	9:15	9:55	0:40	Race 1
CPV Legends	10:15	10:40	0:25	Race 1
Single Seater Series	11:00	11:15	0:15	Race 1
GT & Sports Car Cup GT Pre-1966	11:25	12:05	0:40	Qualifying
CPCV + CPV 1300 + C80	12:25	12:50	0:25	Race 1
Landsdown Motorcycles	13:10	13:30	0:20	Race 1
HGPCA	13:50	14:15	0:25	Race 1
CPV Super Legends	14:35	15:00	0:25	Race 1
Group 1 Portugal	15:20	16:00	0:40	Race 2
CPV / Iberian Supercars	16:10	16:25	0:15	Qualifying 1
CPV / Iberian Supercars	16:30	16:45	0:15	Qualifying 2
Single Seater Series	17:05	17:20	0:15	Race 2
Iberian Historic Endurance	17:40	18:30	0:50	Race 1
DOMINGO SUNDAY	INÍCIO START	FIM END	DURAÇÃO LENGTH	
CPV Legends	8:10	8:35	0:25	Race 2
CPV / Iberian Supercars	9:00	9:45	0:45	Race 1
GT & Sports Car Cup GT Pre-1966	10:05	12:05	02:00	Race
CPCV + CPV 1300 + C80	12:25	12:50	0:25	Race 2
HGPCA	13:10	13:35	0:25	Race 2
Landsdown Motorcycles	13:55	14:15	0:20	Race 2
Iberian Historic Endurance	14:35	15:25	0:50	Race 2
CPV / Iberian Supercars	15:50	16:35	0:45	Race 2
CPV Super Legends	16:55	17:20	0:25	Race 2
Parade Laps	17:25	17:45	0:20	Parade





ALGARVE CLASSIC FESTIVAL

25-27 OUTUBRO '24



FUEL

The circuit has a fuel station in the Paddock. You can buy directly on the fuel station.



ALGARVE CLASSIC FESTIVAL

25-27 OUTUBRO '24



VIP LOUNGE

During the 3 days of event the VIP Lounge will be open for the drivers and their guests. To have access to the lounge is mandatory the use of a wristband that you can buy at the Infopoint or directly through this page : <https://lp.zicket.pt/restrict/vip-lounge-acf-2>

The price for the organizers will be 39.00€ per person, per day.

VIP lounge access includes:

1. Coffee station in the morning and in the afternoon, with water, juices, hot drinks (coffee and teas), biscuits and cookies.
2. Lunch buffet

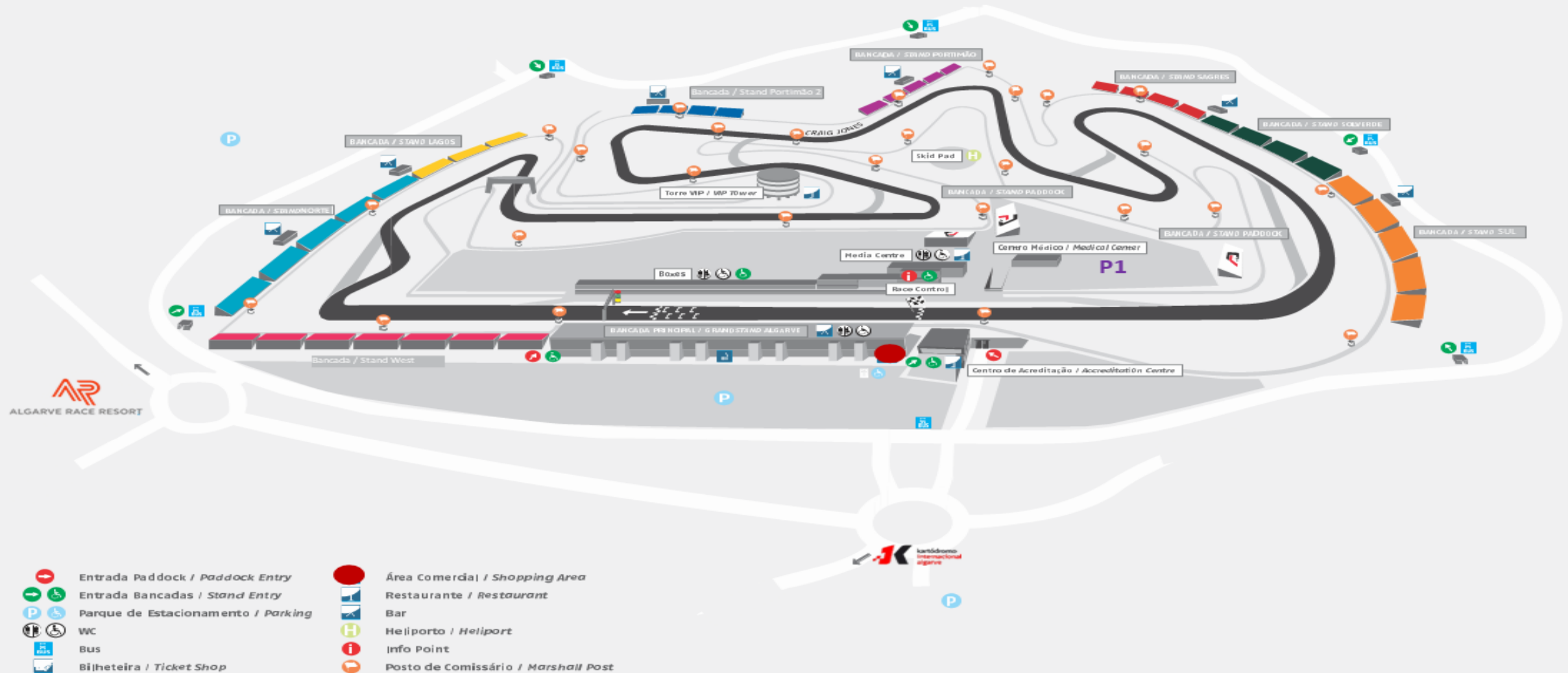
TIMES:

FRIDAY, 25th October: 08H30 – 18H15

SATURDAY, 26th October: 08H00 – 18H30

SUNDAY, 27th October: 08H30 – 16H30

CIRCUIT MAP





Circuit Key People



Jaime Costa
CEO



Miguel Praia
CCO



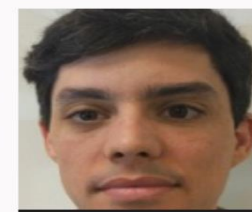
Yana da Silva
Event Manager
yanadasilva@parkalgar.com
mobile: +351 965 700 800



David Lázaro
Operations Manager
davidlazar@parkalgar.com
mobile: +351 933 944 999



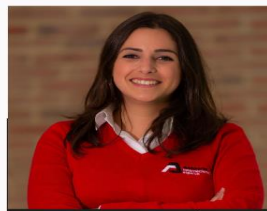
Álvaro Ponciano
Sporting Manager
alvaroponciano@parkalgar.com
mobile: +351 967 085 280



João Nunes
Sales & Corporate
joaonunes@parkalgar.com
mobile: +351 924 133 208



Miguel Glória
Timekeeping
miguelgloria@parkalgar.com
mobile: +351 917 568 555



Joana Melo
Marketing &
Communication Manager
joanamelo@parkalgar.com
mobile: +351 962 383 525



Nuno Silva
F&B Manager
nunossilva@parkalgar.com
mobile: +351 962 158 682



Carlos Martins
IT Technician
carlosmartins@parkalgar.com
mobile: +351 969 073 523



ALGARVE CLASSIC FESTIVAL

25-27 OUTUBRO '24



Emergency Services

Hospital : ULS Algarve - Hospital de Portimão

Estr. Do Poço Seco, 8500-338

Portimão

+351 282 450 300

<https://g.co/kgs/moCeg3c>

Emergency Number: 112



ALGARVE CLASSIC FESTIVAL

25-27 OUTUBRO '24



REGULATIONS FOR THE USE OF THE PIT BOXES

1. SMOKING OR MAKING FIRE IS EXPRESSLY PROHIBITED IN THE PIT BOXES AND/OR PIT LANE;
2. The gate on the Paddock side should be kept closed to prevent the entry of unauthorized personnel;
3. After use, the Pit Box must be left clean and without stickers or it will be charge the fee of 500€;
4. The damage caused on the premises and/or facilities will be paid for by the user(s);
5. Is not allowed to attach stickers, posters or other signage to the Pit Box doors, Windows or walls;
6. Children under 16 are not allowed to remain on the Pit Lane during the tests;
7. The waste oils should be placed on the existing drums on the Paddock, by the stairs to the first floor or it will be charged the fee of 500€-;
8. The Box must be clear and key delivered on the INFO POINT within 2 hours after the end of the event. The key deposit will only be returned after verification, by a member of the Circuit, of the appropriate state of cleanliness and confirm that no damage was caused on the premises and/or equipment's.
9. It is not possible to sleep inside the boxes.

The failure of one or more standards of this Regulation will allow the Circuit to retain guarantee(s) left by users and require the payment of all damages that would register.

The explicit non-compliance with this Regulation and willful failure to comply with the above rules will mean immediate expulsion from the premises, without right to refund of any amount previously paid.

'Leave the premises as you would like to find them'



ALGARVE CLASSIC FESTIVAL

25-27 OUTUBRO '24



Thank you

Autódromo Internacional do Algarve

Sítio do Escampadinho, Mexilhoeira Grande, 8500-148 Portimão, Algarve - Portugal